

ROTEL *hi fi*

STEREO INTEGRATED AMPLIFIER

RA-935BX

TECHNICAL MANUAL

TABLE OF CONTENTS

| | |
|--------------------------------|---|
| Chassis Layout..... | 1 |
| Specifications..... | 2 |
| Adjustment..... | 2 |
| Wiring Diagram..... | 3 |
| Printed Circuit Boards..... | 4 |
| Schematic Diagram..... | 5 |
| PC Board Ass'y Parts List..... | 6 |

THE ROTEL CO., LTD.

1-36-8, OHOKAYAMA, MEGURO-KU, TOKYO 152, JAPAN

ROTEL ELECTRONICS CO., LTD.

3F-2, NO.35, FU HSING NORTH ROAD, TAIPEI, TAIWAN, REPUBLIC OF CHINA

MN20002061

ROTEL *hi fi*

STEREO INTEGRATED AMPLIFIER

RA-935BX

TECHNICAL MANUAL

TABLE OF CONTENTS

| | |
|--------------------------------|---|
| Chassis Layout..... | 1 |
| Specifications..... | 2 |
| Adjustment..... | 2 |
| Wiring Diagram..... | 3 |
| Printed Circuit Boards..... | 4 |
| Schematic Diagram..... | 5 |
| PC Board Ass'y Parts List..... | 6 |

THE ROTEL CO., LTD.

1-36-8, OHOKAYAMA, MEGURO-KU, TOKYO 152, JAPAN

ROTEL ELECTRONICS CO., LTD.

3F-2, NO.35, FU HSING NORTH ROAD, TAIPEI, TAIWAN, REPUBLIC OF CHINA

MN20002061

Specifications

RA-935BX

Continuous Power Output 40 watts* per channel, min. RMS both channels driven into 8 ohms from 20 to 20,000 kHz with no more than 0.05% total harmonic distortion.

DIN Output 60 watts per channel (1 kHz, 4 ohms, 1% THD)

Music Power 110 watts

Total Harmonic Distortion (20 to 20 kHz from AUX) No more than 0.05% (continuous rated power output) No more than 0.03% (continuous 1/2 rated power output) No more than 0.03% (1 watt per channel power output, 8 ohms)

Intermodulation Distortion (60 Hz : 7 kHz = 4:1) No more than 0.03% (continuous rated power output) No more than 0.01% (continuous 1/2 rated power output) No more than 0.02% (1 watt per channel power output, 8 ohms)

Output: Speakers 4 ohms minimum

Headphone 8 - 2,000 ohms

Damping Factor 150 (20 to 20,000 Hz, 8 ohms)

Input Sensitivity/Impedance:

CD, TUNER 210 mV/ 15 kohms

AUX, TAPE 1, 2 210 mV/ 15 kohms

Overload Level (THD 0.5%, 1 kHz):

CD, TUNER 5 V

AUX, TAPE 1, 2 5 V

Frequency Response:

CD, TUNER 10 to 100 kHz, + 1.0 dB, -3.0 dB

AUX, TAPE 1, 2 10 to 100 kHz, + 1.0 dB, -3.0 dB

Signal to Noise Ratio (IHF, A network):

CD, TUNER 105 dB

AUX, TAPE 1, 2 105 dB

MISCELLANEOUS

Power Requirement 120 V/60 Hz, 230 V/50 Hz, 240 V/50 Hz (depending on destinations)

Power Consumption 300 Watts

Dimension (overall) 440 (W) x 92 (H) x 347 (D) mm
17-3/8" x 3-5/8" x 13-11/16"

Weight (net) 6.1 kg/ 13.4 lbs

- Specifications and design subject to possible modification without notice.
- *Measured pursuant to the Federal Trade Commission's Trade Regulation Rule or, Power Claims for Amplifiers (applicable to the U.S.A. only).

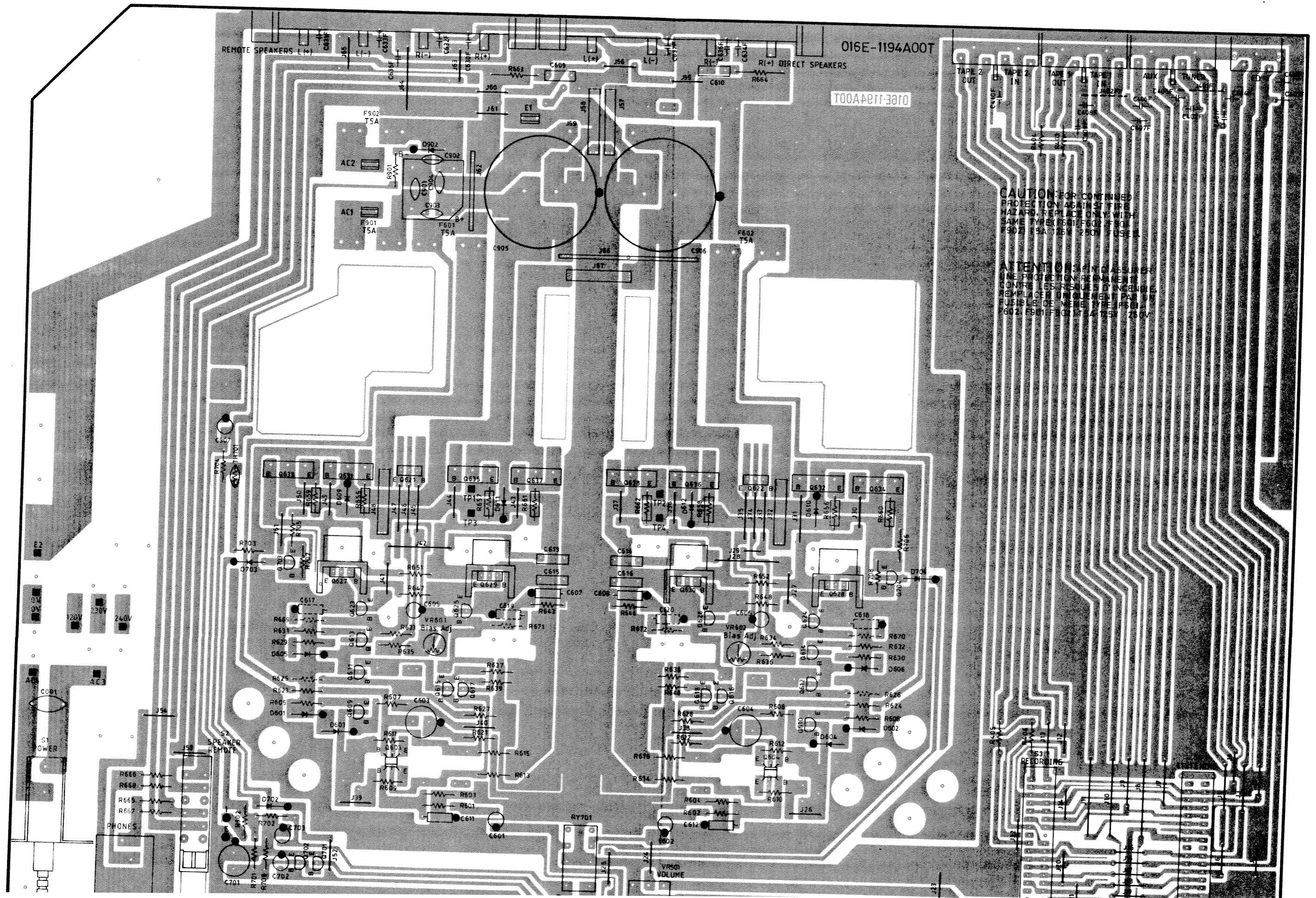
Power Amplifier Bias Adjustment

Instruments: DC milli-voltmeter

Notes: Prior to Bias Adjustment, run about 5 minutes with rated output (8 ohm) and warm up Power Transistor and Heat Sink.
Set Volume control to minimum.

| Step | Coupling | | Adjust | Adjust for |
|------|-----------|------------|--------|-------------------------------|
| | Plus Lead | Minus Lead | | |
| 1 | TP3 | TP1 | VR601 | DC milli-voltmeter reads 6 mV |
| 2 | TP4 | TP2 | VR602 | |

Printed Circuit Boards



016E-1194A00T

016E-1194A00T

CAUTION: FOR CONTINUED PROTECTION AGAINST FIRE HAZARD, REPLACE ONLY WITH SAME TYPE F601, F602, F603, F901, F902, F903, F904, 25V, 250V FUSE.

ATTENTION: POUR ASSURER UNE PROTECTION PERMANENTE CONTRE LES RISQUES D'INCENDIE, REMPLACER UNIQUEMENT PAR UN FUSIBLE DE MEME TYPE F601, F602, F901, F902, F903, F904, 25V, 250V.

120V 230V 240V

PHONES

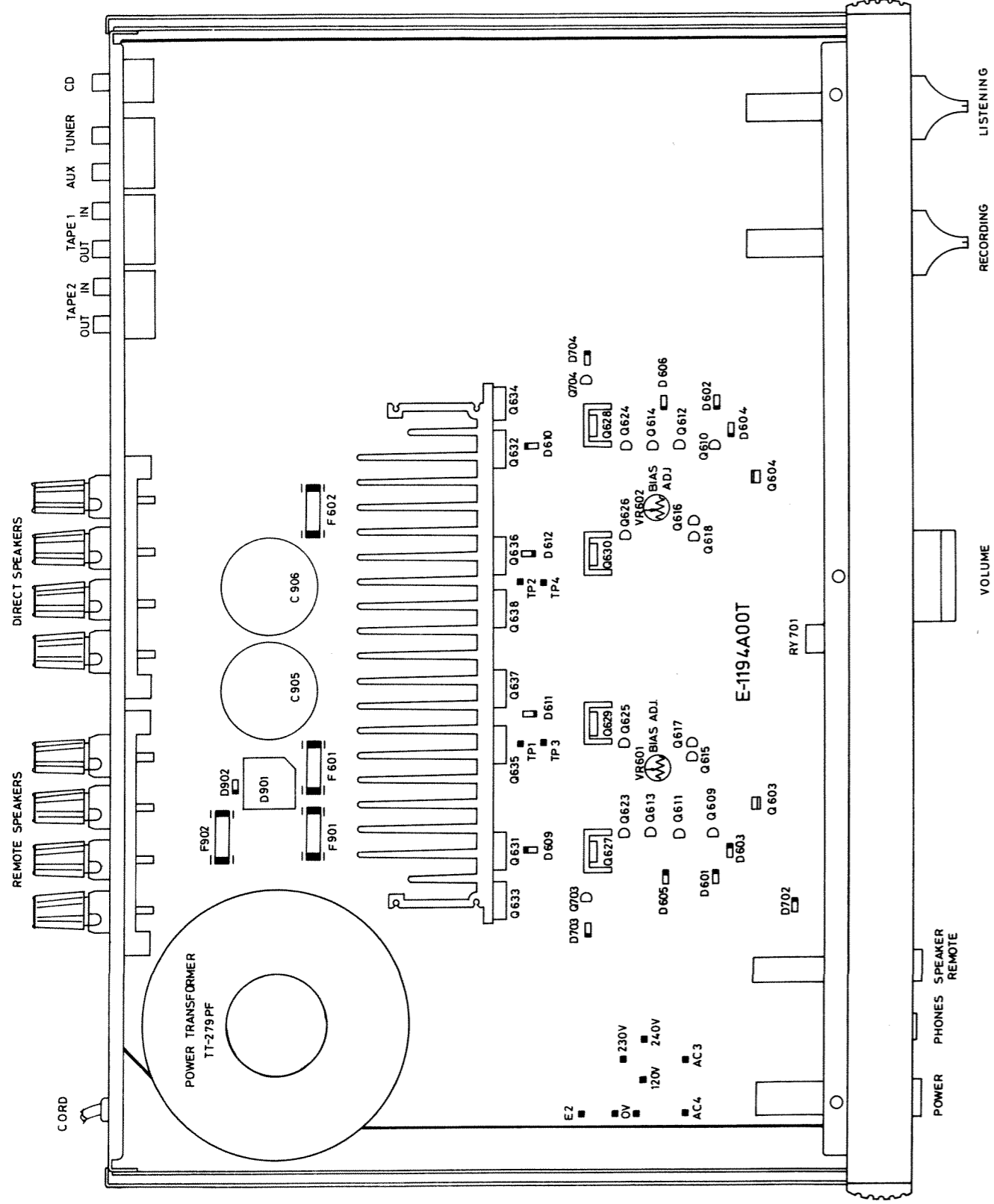
VR501 VOLUME

RECORDING

Parts List

| SYMBOL | PARTS NO. | DESCRIPTION |
|--------|------------|---|
| | KB10001734 | KNOB 4TQF-19 24F |
| | KB10001746 | KNOB 4TQF-20 33F (WR) |
| | KB10001758 | KNOB 4TQF-21 33F (WF) |
| | FE00000079 | FELT 4TR-1083B#3 46F |
| | FE00000092 | FELT 4TR-1083B#2 30F |
| | SR00000882 | UPPER COVER SPACER 4TR-2418 |
| | MN10002975 | OWNER'S MANUAL RA-935BX |
| | PL00001051 | STYROL SIDE MOULDING 2TR-2800 TZ-183 |

Chassis Layout



Specifications

RA-935BX

Continuous Power Output 40 watts* per channel, min. RMS both channels driven into 8 ohms from 20 to 20,000 kHz with no more than 0.05% total harmonic distortion.

DIN Output 60 watts per channel (1 kHz, 4 ohms, 1% THD)

Music Power 110 watts

Total Harmonic Distortion (20 to 20 kHz from AUX) No more than 0.05% (continuous rated power output) No more than 0.03% (continuous 1/2 rated power output) No more than 0.03% (1 watt per channel power output, 8 ohms)

Intermodulation Distortion (60 Hz : 7 kHz = 4:1) No more than 0.03% (continuous rated power output) No more than 0.01% (continuous 1/2 rated power output) No more than 0.02% (1 watt per channel power output, 8 ohms)

Output: Speakers 4 ohms minimum

Headphone 8 - 2,000 ohms

Damping Factor 150 (20 to 20,000 Hz, 8 ohms)

Input Sensitivity/Impedance:

CD, TUNER 210 mV/ 15 kohms

AUX, TAPE 1, 2 210 mV/ 15 kohms

Overload Level (THD 0.5%, 1 kHz):

CD, TUNER 5 V

AUX, TAPE 1, 2 5 V

Frequency Response:

CD, TUNER 10 to 100 kHz, + 1.0 dB, -3.0 dB

AUX, TAPE 1, 2 10 to 100 kHz, + 1.0 dB, -3.0 dB

Signal to Noise Ratio (IHF, A network):

CD, TUNER 105 dB

AUX, TAPE 1, 2 105 dB

MISCELLANEOUS

Power Requirement 120 V/60 Hz, 230 V/50 Hz, 240 V/50 Hz (depending on destinations)

Power Consumption 300 Watts

Dimension (overall) 440 (W) x 92 (H) x 347 (D) mm
17-3/8" x 3-5/8" x 13-11/16"

Weight (net) 6.1 kg/ 13.4 lbs

- Specifications and design subject to possible modification without notice.
- *Measured pursuant to the Federal Trade Commission's Trade Regulation Rule or, Power Claims for Amplifiers (applicable to the U.S.A. only).

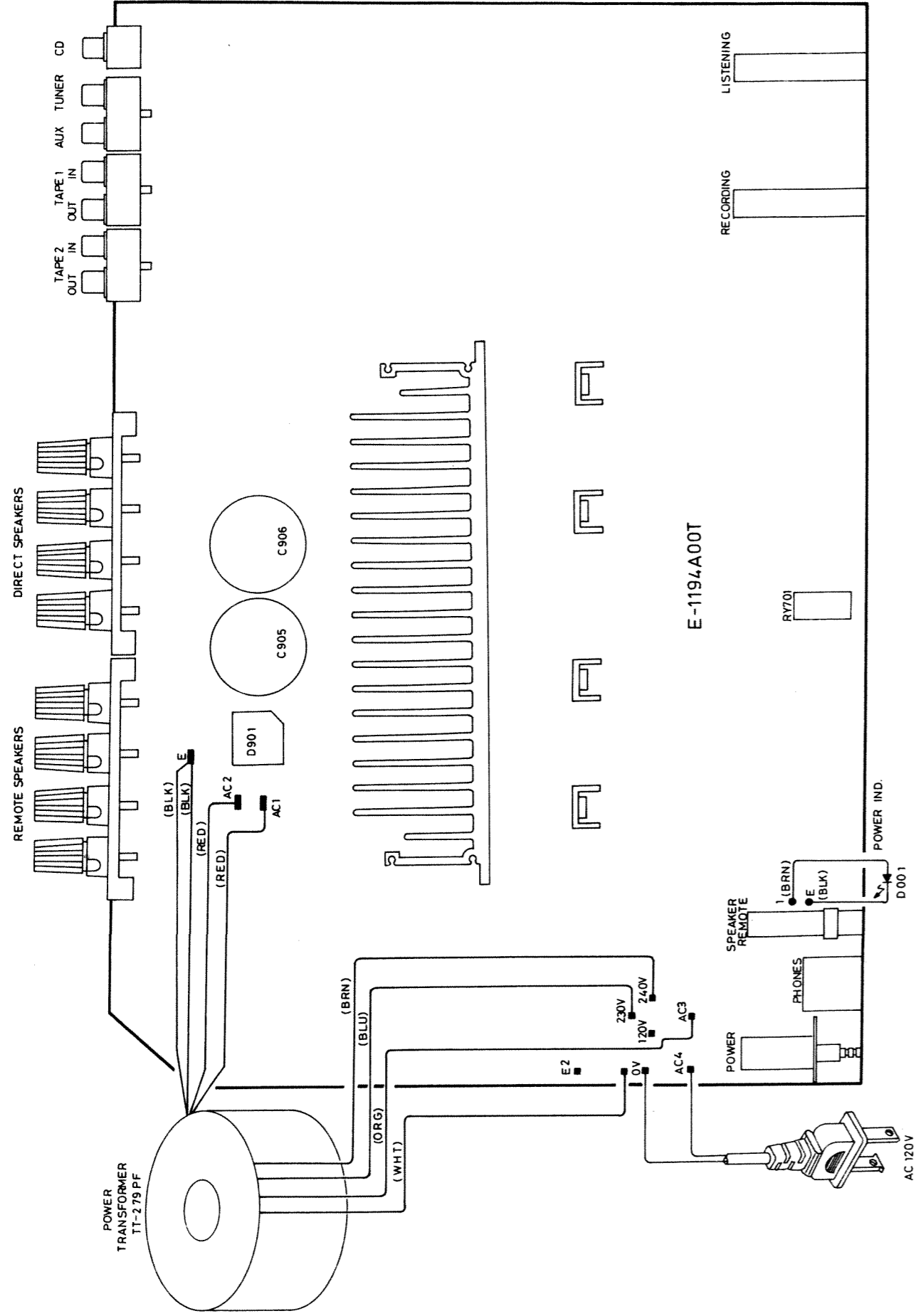
Power Amplifier Bias Adjustment

Instruments: DC milli-voltmeter

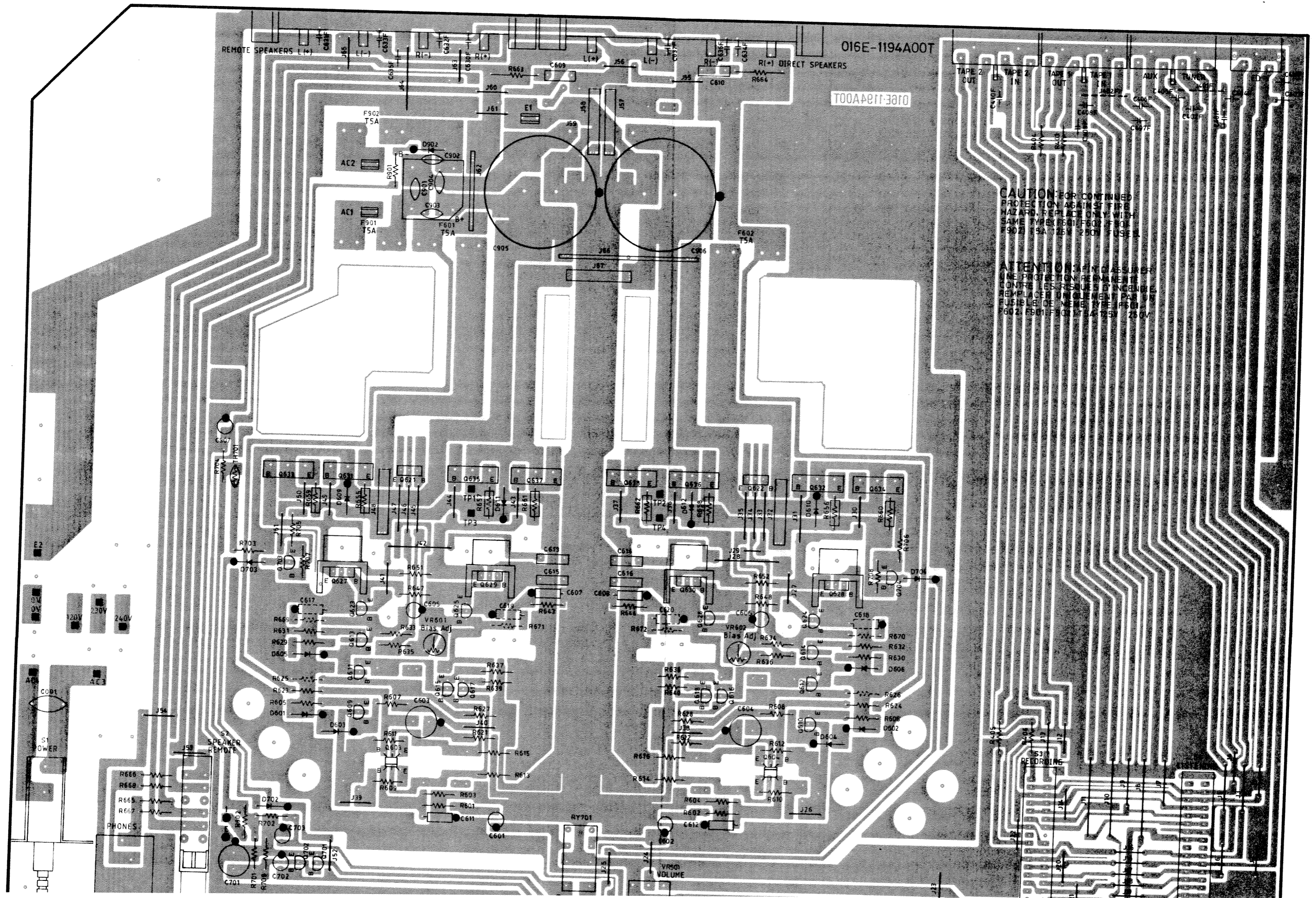
Notes: Prior to Bias Adjustment, run about 5 minutes with rated output (8 ohm) and warm up Power Transistor and Heat Sink.
Set Volume control to minimum.

| Step | Coupling | | Adjust | Adjust for |
|------|-----------|------------|--------|-------------------------------|
| | Plus Lead | Minus Lead | | |
| 1 | TP3 | TP1 | VR601 | DC milli-voltmeter reads 6 mV |
| 2 | TP4 | TP2 | VR602 | |

Wiring Diagram



Printed Circuit Boards

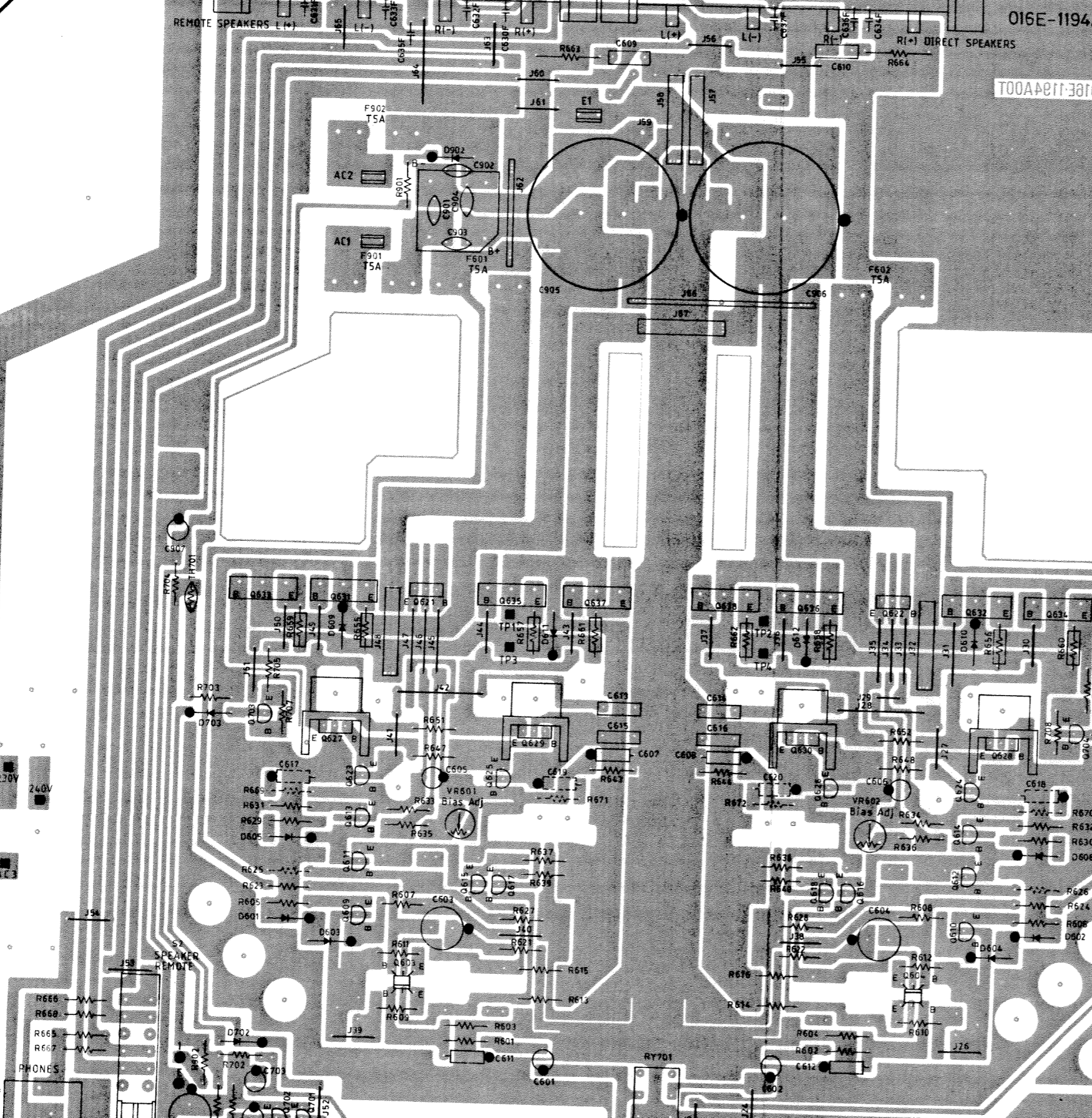


016E-1194A00T

TOOAE11-3A0T

CAUTION: FOR CONTINUED PROTECTION AGAINST FIRE HAZARD, REPLACE ONLY WITH SAME TYPE F601, F602, F603, F901, F902, F903, F904, 25V, 250V FUSE.

ATTENTION: POUR ASSURER UNE PROTECTION PERMANENTE CONTRE LES RISQUES D'INCENDIE, REMPLACER UNIQUEMENT PAR UN FUSIBLE DE MEME TYPE F601, F602, F901, F902, F903, F904, 25V, 250V.



REMOTE SPEAKERS L(+), L(-), R(+), R(-), DIRECT SPEAKERS

TAPES 2 IN, TAPES 2 OUT, AUX IN, TUNING

PHONES

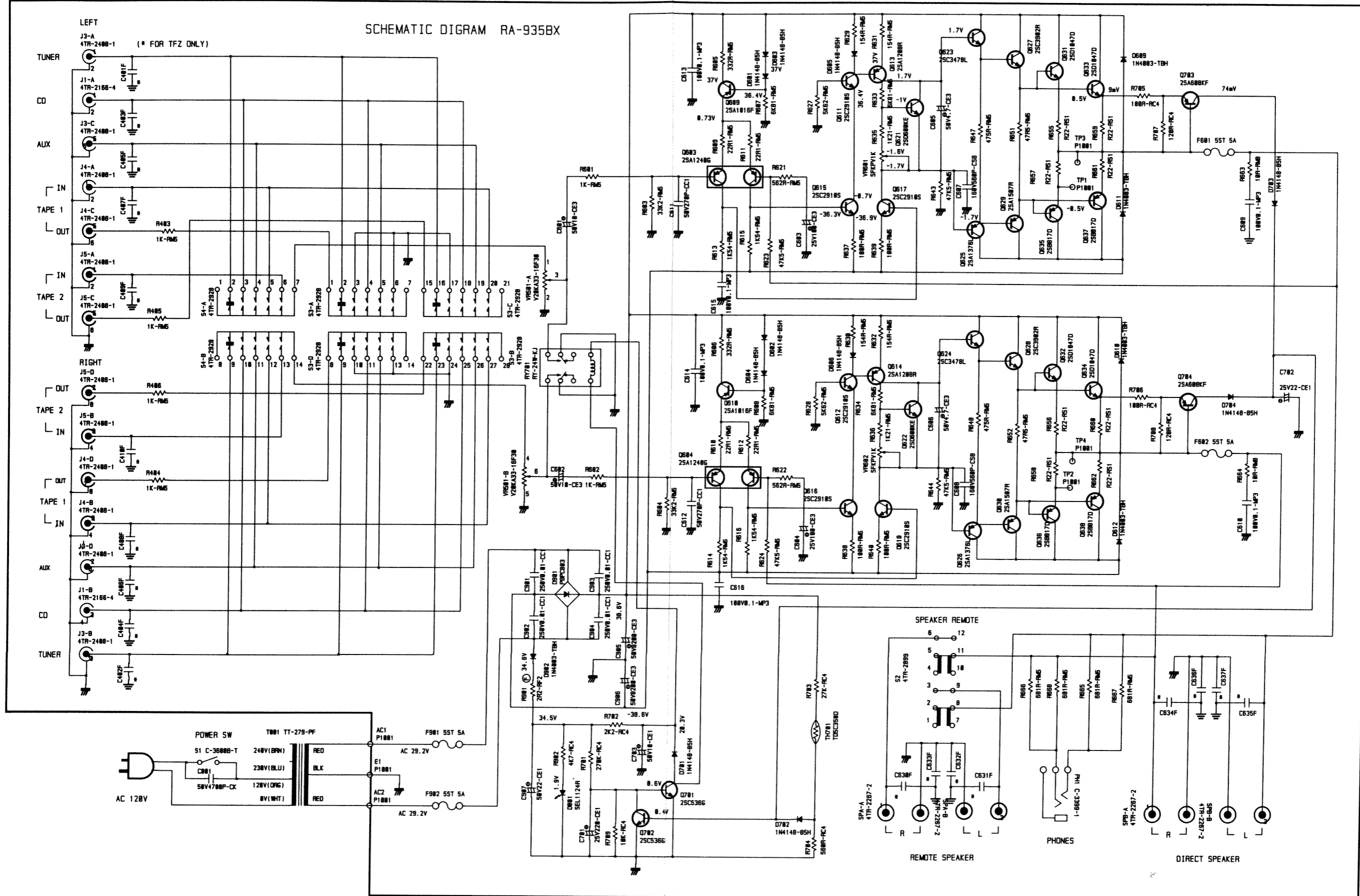
SPEAKER REMOTE

VR501 VOLUME

RECORDING

Schematic Diagram

SCHEMATIC DIGRAM RA-935BX



Parts List

| SYMBOL | PARTS NO. | DESCRIPTION |
|--------|------------|---|
| | KB10001734 | KNOB 4TQF-19 24F |
| | KB10001746 | KNOB 4TQF-20 33F (WR) |
| | KB10001758 | KNOB 4TQF-21 33F (WF) |
| | FE00000079 | FELT 4TR-1083B#3 46F |
| | FE00000092 | FELT 4TR-1083B#2 30F |
| | SR00000882 | UPPER COVER SPACER 4TR-2418 |
| | MN10002975 | OWNER'S MANUAL RA-935BX |
| | PL00001051 | STYROL SIDE MOULDING 2TR-2800 TZ-183 |